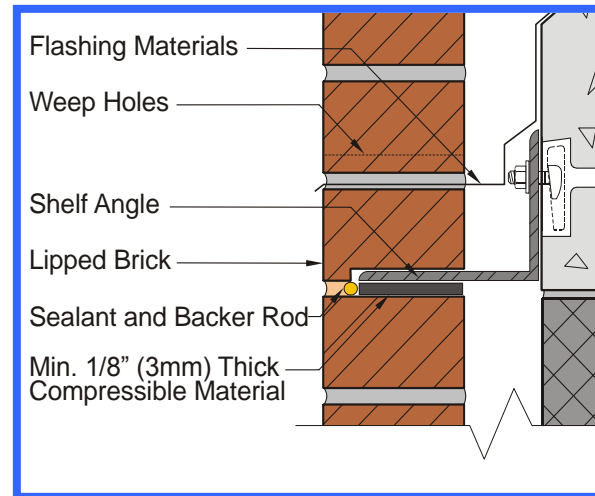


Neoprene Foam

ABP Neoprene Foam is a closed-cell, non-absorbent horizontal and vertical joint filler used in a variety of masonry applications. Neoprene allows expansion and prevents clogging of joints with mortar.

Description:

- Place ABP Neoprene Foam horizontally beneath relieving angle, or in the vertical expansion joint to act as a control joint.
- Prevents clogging of expansion joint with mortar.
- Conforms to ASTM D 1056 Grade 2A1



Color:	DarkGray/Black
Polymer:	Neoprene/SBR
	ASTM Specification D 1056 91 SCE 41/2A1
	SAE Specification 18-R
Tensile Strength:	PSI ASTM D 3575 65
Density:	(pcf) approx. 2-5
Elongation:	ASTM D Method 3575
Temperature Resistance:	
Low	-90 degrees F
High Continuous	+155 degrees F
High Intermittent	+210 degrees F

Compression Set (max): 12% / 25% - ASTM D 3575/1056
ASTM Method—1/2" samples compressed 50% 22 hours @
70 degrees F° 24 hour recovery

Compression Deflection (psi): 5-12
Weight required to compress a 1.129" diameter disc by 25%
varies according to thickness.

Accelerated Aging:
(7 days at 170°F) - Flexibility - 180°F was excellent, bent
without cracking, no appearance change
Shrinkage, Lin. Max: 3% (+ or -)

Water Absorption by Weight: 5% (Max.) (ASTM method)

